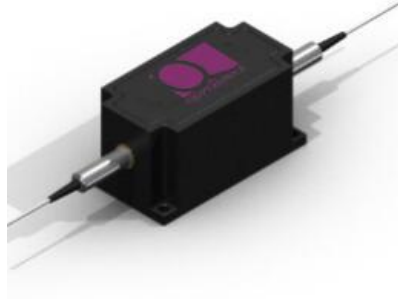




上海量青光电技术有限公司

850nm 高功率保偏在线光隔离器

850nm High Power PM In Line Optical Isolator



Applications:	Features:
EDFA & Instrumentation & Fiber Amplifier Fiber Laser & Lab Research	Low Insertion Loss High Isolation & Return Loss High reliability and High Extinction Ratio

Parameter	Unit	Specification
Part No.	-	LQ-HPPI-W-AA-PT-PW-PF-C
Center wavelength	nm	850
Bandwidth	nm	±10
Insertion Loss@23℃	dB	≤1.0(typ.0.7)
Peak Isolation	dB	32~40
Isolation@23℃	dB	>25
ER TypeB(Both axis working)	dB	>18
ER TypeF(Fast axis blocked)	dB	>20
Return Loss	dB	>50/50
Optical Power	W	1,2,3,5 etc
Fiber type	-	PM850 etc
Operating Temperature	℃	0~+65
Storage Temperature	℃	-20~+85
Package Dimension	mm	94x33x35

Above specifications are for device without connector.

For devices with connector, IL will be 0.3dB higher,ER will be 2dB lower and RL will be 5dB lower, and max handling power is 1W

The PM fiber and the connector key are aligned to the slow axis.

总机: 021-64778883

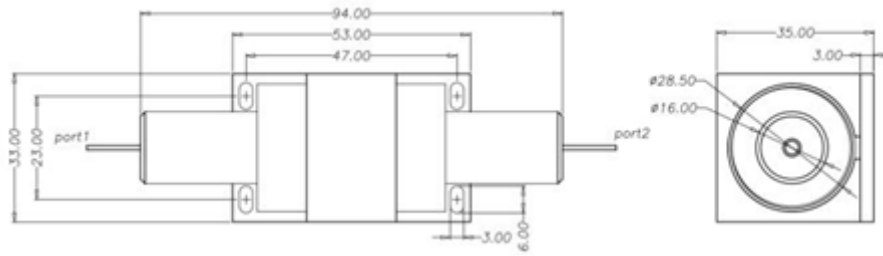
邮箱: sales@qoptronics.com

官网: www.qoptronics.com

地址: 上海市浦东新区张江高科技园区张江路 655 号德宏大厦 302 室



上海量青光电技术有限公司



Order Information:

LQ-HPPI-W-AA-PT-PW-PF-C

W:Wavelength,85=850nm

AA:axis alignment,B=both axis working,F=fast axis blocked

PT:polarization type,PI-polarization insensitive,PS-polarization sensitive

PW: Output power in W, example:1-1W ,2-2w,3-3W,5-5W,10-10W

PF: Pigtail fiber, 0=250um,1=900um

C: Connector,FU=FC/UPC,FA=FC/APC,SA=SC/APC,,SU=SC/UPC,LA=LC/APC,LU=LC/UPC

总机：021-64778883

邮箱：sales@qoptronics.com

官网：www.qoptronics.com

地址：上海市浦东新区张江高科技园区张江路 655 号德宏大厦 302 室